

LUMOTAST 16, emergency stop button aktiv/inaktiv, 2 NC, Gold, Flat quick-connect terminal 2.8 x 0.5 tin-plated, reset by rotating



fields of application

- Measurement-control-regulation
- Electrical engineering
- Mechanical and system engineering
- Signalling systems
- Handheld terminals
- Industrial robots
- Model construction

special features

- Round mounting hole, diameter 16.2 mm
- Mounting depth: 18 mm
- Terminal: male quick-connect terminal 2.8 x 0.5 mm
- Solderability: lead-free soldering with maximum 280°C for 5 seconds
- Water jet protection class IP 65 and IP 67 on front



description

The LUMOTAST 16 emergency stop elements are equipped with up to 3 contacts. This means that, for example, 2 redundant contacts can be earmarked for safety applications, while a signaling contact triggers the position sensing. An additional safety factor for your application.

Active/inactive emergency stop for handheld controls with connection to a stationary unit. When the connection to the stationary control unit is active, the colorless, transparent plastic mushroom pushbutton is illuminated in red by an integrated LED. . However, when the connection to the stationary control unit is inactive, the mushroom pushbutton remains colorless.

technical data

➤ general

| | |
|---|----------------|
| Color of mushroom | transparent |
| Property of bezel / mushroom | translucent |
| Collar shape | round |
| Operating temperature, min. | -25 °C |
| Operating temperature, max. | 70 °C |
| Storage temperature, min. | -40 °C |
| Storage temperature, max. | 80 °C |
| illuminated | Yes |
| Luminous elements | LED |
| Packaging | Box |
| Packaging unit | 10 pcs. |
| net weight | 13.5 g |
| Operating life | 30,000 cycles |
| B10 | 50,000 cycles |
| B10d | 100,000 cycles |
| Degree of protection, front side, according to DIN EN 60529 | IP65 IP67 |

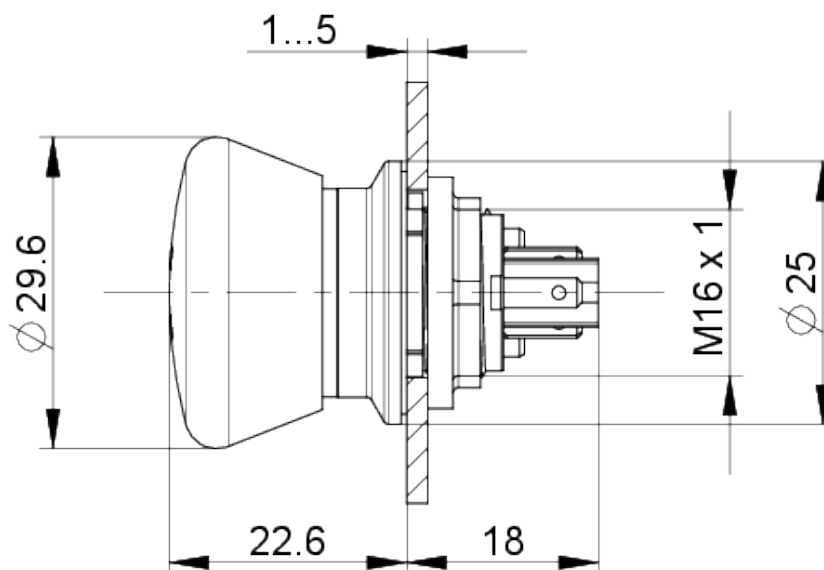
direct links

- [RAFI eCatalog](#)

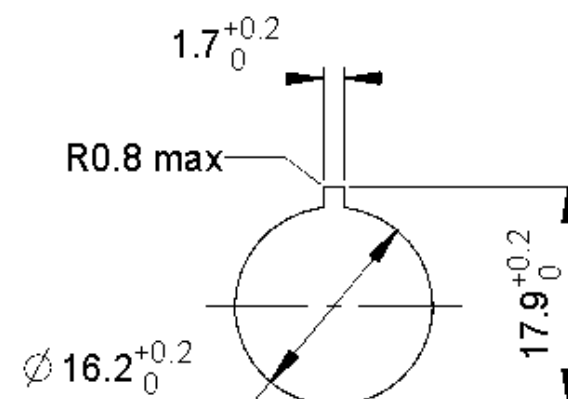
| | |
|---|--|
| UL Enclosure Type Rating front side | type 1 |
| Impact resistance IK | 05 side 05 frontal |
| MOQ order | 10 pcs. |
| Pollution degree acc. to DIN EN 61010-1 | Pollution degree 2 |
| RoHS compliant | Yes |
| REACH compliant | Yes |
| > mounting diameters | |
| Outside dimension, length | 29.6 mm |
| Outside dimension, width | 29.6 mm |
| Outside dimension, height | 40.6 mm |
| Mounting hole | 16.2 mm |
| Mounting depth | 18 mm |
| Installation height | 22.6 mm |
| > mechanical data | |
| Contact function | 2 NC |
| Contact material | Gold |
| Resetting | by rotating |
| Fixing | Threaded ring |
| Solderability | Yes |
| Threaded ring torque, max. | 0.8 Nm |
| Terminal on the rear | Flat quick-connect terminal 2.8 x 0.5 tin-plated |
| > electrical data | |
| Rated insulation voltage | 250 V |
| Operating voltage of the luminous element, min. | 18 V |
| Operating voltage of the luminous element, max. | 28 V |
| Rated voltage, min. | 10 V |
| Rated voltage, max. acc. to UL 60947 | 35 V DC / 100 mA |
| Voltage type | AC / DC |
| Rated operating voltage | 0.02-30 V |
| Operating current of the luminous element, min. | 8 mA |
| Operating current of the luminous element, max. | 18 mA |
| Rated current, min. | 0.015 A |

drawings

Dimensioned drawing



Mounting hole drawing



mounting

LUMOTAST 16, LUMOTAST 22, LUMOTAST 25, RAMO 22, RAMO 30

Betriebsanleitung Not-Halt-Befehlsgeräte
(Original)

Operating Instructions EMERGENCY STOP
Control Units (Translation of the source text)

Mode d'emploi auxiliaires de commande
d'ARRÊT D'URGENCE (Traduction original)

<