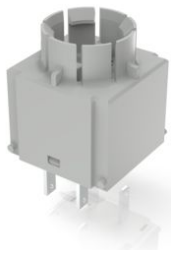


RAFIX 16, universal switching element, gold, without lamp socket, quick-connect terminal, momentary contact function, 2 NC



fields of application

- › Measurement-control-regulation
- › Electrical engineering
- › Mechanical and system engineering
- › Industrial robots

special features

- › Suitable for emergency stop and actuators with 2 switching directions, such as selector switches and key switches
- › Safe switching due to oxidation-free gold contacts (max. 35 V / 0.25 A)
- › NC contacts forcibly separated according to IEC 60947-5-1
- › Two separate switching chambers, so two different potentials can be switched
- › Contact function momentary (switching functions are realized via the actuating element)
- › Mounting by snapping onto actuator
- › Disassembly by turning and pulling off
- › Flat plug-in connections 2.8 x 0.8 mm (also with PCB plug-in base) or screw connection



description

RAFIX universal switching elements are designed for emergency stops and actuators with two actuating directions (e.g. selector switches). The universal switching elements always have a momentary contact function - then a switching function is implemented by the actuator alone.

technical data

› general

Color	light gray
Operating temperature, min.	-25 °C
Operating temperature, max.	70 °C
Storage temperature, min.	-40 °C
Storage temperature, max.	85 °C
illuminated	No
Packaging unit	20 pcs.
net weight	8.8 g
Operating life	2,000,000 cycles
B10	2,600,000 cycles
Environment resistance	IEC 60068-2-14 IEC 60068-2-30

direct links

- › [RAFI eCatalog](#)

	IEC 60068-2-33
	IEC 60068-2-78
Shock resistance according to standard IEC 60068-2-27	50 g at 11 ms amplitude semi-sinusoidal
Vibration-resistance according to standard IEC 60068-2-6	10 g at 20 - 500 Hz
Protection class	II
MOQ order	20 pcs.
RoHS compliant	Yes
REACH compliant	Yes
> mounting diameters	
Outside dimension, length	22.2 mm
Outside dimension, width	22.2 mm
Outside dimension, height	34.4 mm
Mounting depth	44.7 mm
> mechanical data	
Actuation function	momentary contact function
Operating force, max.	100 N
Operating travel, max.	3 mm
Contact function	2 NC
Contact system	Bridge contact
Contact material	Gold
Fixing	Latching
Solderability	No
Terminal on the rear	Flat quick-connect terminal 2.8 x 0.8
> electrical data	
Rated voltage, min.	0.02 V
Rated voltage, max.	35 V
Voltage type	AC / DC
Rated operating voltage	0.02-35 V
Rated current, min.	0.001 A
Rated current, max.	0.25 A
Power loss	0.00125 W

drawings

System drawing