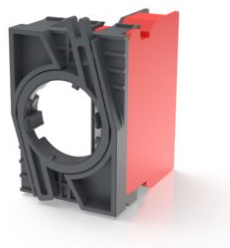


RAFIX 22 QR, switching element, screw terminal, gold, with coupling, 1 NO



fields of application

- Measurement-control-regulation
- Electrical engineering
- Mechanical and system engineering
- Vehicle construction

special features

- Switching elements with screw connection
- Mounting by snapping on (onto coupling) and actuator
- The connections are open, wiring can start immediately
- The screws are captively fixed in the terminal point
- Time and material savings due to elimination of ferrules for stranded wires
- Rigid wires and stranded wires can be used
- Less wiring effort by inserting the cables from the rear, as no bending of the wires is necessary.
- Disassembly by loosening the bayonet lever of the coupling



description

RAFIX control units are modular units consisting of several parts. In the RAFIX 22 QR family, they always consist of an actuating element, coupling, and switching element, or of a light attachment, coupling, and lamp socket. For assembly, the switching elements and lamp holders are first snapped into the coupling. Then this unit is snapped onto the actuating element or the signal lamp. To release, a bayonet lever must be actuated.

For illuminable actuators and indicator lights, please use a lamp socket / LED element as the middle element in the coupling.

Switching elements marked in different colors prevent confusion in the bearing and when connecting:

- 1/2 NC contacts = 1/2 red side cover
- 1/2 normally open contacts = 1/2 green side covers
- 1 NC and 1 NO contact = 1 red and 1 green side cover
- Silver contacts = housing base color black
- Gold contacts = housing base color gray
- Lamp socket and LED element = completely black
- The connections belonging to a pair of contacts are marked in color on the connection side and provided with contact identification numbers: 1-2 = NC contact, 3-4 = NO contact
- Sicheres Schalten von Kleinströmen durch oxidationsfreie Goldkontakte (max. 35 V / 0,25 A)
- Lieferumfang; 1 x Schaltelement mit 1 Schließer-Kontakt (1 S), eingerastet in Kupplung
- Montage durch Aufrasten der Kupplung auf Betätiger

technical data

➤ general

| | |
|---|--|
| Color | light gray |
| Operating temperature, min. | -25 °C |
| Operating temperature, max. | 70 °C |
| Storage temperature, min. | -40 °C |
| Storage temperature, max. | 80 °C |
| illuminated | No |
| Packaging unit | 5 pcs. |
| net weight | 20.9 g |
| Operating life electrical | 1.000.000 (10mA / 24V DC) cycles |
| B10 electrical | 1.300.000 (10mA / 24V DC) cycles |
| Environment resistance | IEC 60068-2-14 IEC 60068-2-30 IEC 60068-2-33 IEC 60068-2-78 |
| Shock resistance according to standard IEC 60068-2-27 | 15 g at 11 ms amplitude semi-sinusoidal |

direct links

- [RAFI eCatalog](#)

| | |
|--|-----------------------------|
| Vibration resistance according to standard IEC 60068-2-6 | 5 g at 10 - 500 Hz |
| MOQ order | 10 pcs. |
| RoHS compliant | Yes |
| REACH compliant | Yes |
| > mounting diameters | |
| Outside dimension, length | 49.9 mm |
| Outside dimension, width | 39.5 mm |
| Outside dimension, height | 30 mm |
| Mounting depth | 56.4 mm |
| > mechanical data | |
| Operating force, max. | 100 N |
| Contact function | 1 NO |
| Contact system | Bridge contact |
| Contact material | Gold |
| Fixing | Latching |
| Terminal on the rear | Screw terminal |
| Connection marking | Normally Open: 13/14, 23/24 |
| Abisolierlänge | 8 mm |
| Wire end sleeve required | Ja |
| > electrical data | |
| Rated voltage, min. | 0.02 V |
| Rated voltage, max. | 35 V |
| Voltage type | AC / DC |
| Rated operating voltage | 0.02-35 V |
| Rated current, min. | 0.00001 A |
| Rated current, max. | 0.1 A |
| Rated power, max. | 1 W |
| Power loss | 0.00010 W |
| Maximum connection cross section | 1.5 mm ² |
| Minimum connection cross section | 0.25 mm ² |

drawings**System drawing**