


# RAFIX 16, pushbutton, flat bezel, square collar, bezel white



fields of application

➤ Measurement-control-regulation

➤ Electrical engineering

➤ Mechanical and system engineering

➤ Industrial robots

special features

➤ Opaque bezels, not illuminable

➤ Robust - also suitable for operation with gloves

➤ Degree of protection: IP 65 at the front

➤ Mounting diameter 16.2 mm

➤ Separate switching elements required

➤ Close mounting of actuators possible due to axial wiring from behind

➤ Switching elements with silver contacts (max. 250 V / 6 A) or gold contacts (max. 35 V / 0.25 A)

➤ Connection types switching elements: screw connection, plug connection, PCB plug-in socket

CCC

CE

SP

## description

RAFIX control devices are modular units consisting of several parts. In the RAFIX 16 family, they always consist of an actuating element and a switching element, or of an indicator lamp and a lamp socket. Actuating elements (such as pushbuttons or emergency stop actuators) have the specified tactility, reset and function only when assembled with the appropriate switching elements. For illuminated actuators, please use switching elements with lamp socket.

With RAFIX 16 actuators, you can choose between three collar shapes: round, square or square side-by-side, where the pushbuttons can be lined up seamlessly. The mounting diameter is 16.2 mm according to the standard. The anti-rotation lug can be easily removed with a screwdriver if necessary.

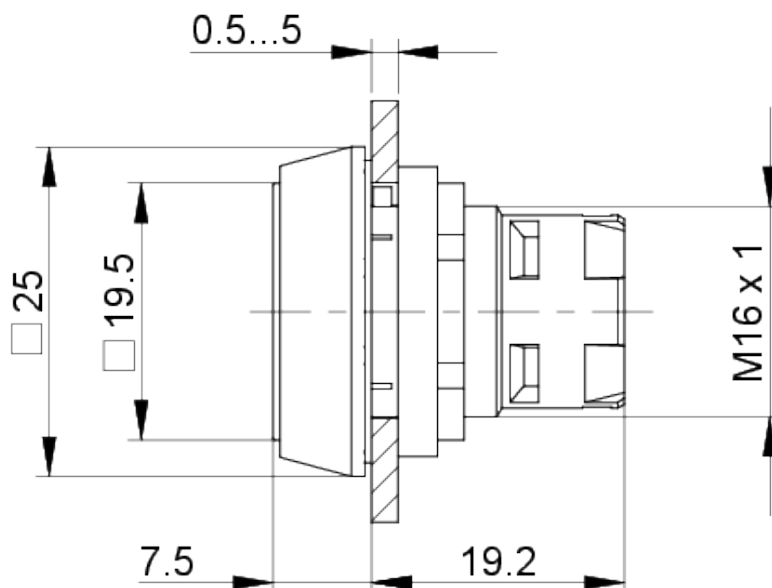
## technical data

➤ general		direct links
Bezel color	white	➤ RAFI eCatalog
Property of bezel / mushroom	opaque	
Collar shape	square	
Operating temperature, min.	-25 °C	
Operating temperature, max.	70 °C	
Storage temperature, min.	-40 °C	
Storage temperature, max.	85 °C	
illuminated	No	
Packaging	Box	
Packaging unit	20 pcs.	
net weight	7 g	

Operating life	2,000,000 cycles
B10	2,600,000 cycles
Degree of protection, front side, according to DIN EN 60529	IP65
Environment resistance	IEC 60068-2-14 IEC 60068-2-30 IEC 60068-2-33 IEC 60068-2-78
MOQ order	100 pcs.
RoHS compliant	Yes
REACH compliant	Yes
<b>&gt; mounting diameters</b>	
Outside dimension, length	24.95 mm
Outside dimension, width	24.95 mm
Outside dimension, height	26.35 mm
Mounting hole	16.2 mm
Mounting depth	44.7 mm
Installation height	7.15 mm
Grid, min.	25 x 25 mm
Collar dimension	24,95 x 24,95 mm
<b>&gt; mechanical data</b>	
Operating force, max.	100 N
Operating travel, max.	3 mm
Fixing	Threaded ring
Threaded ring torque, max.	1.2 Nm

## drawings

### Dimensioned drawing



### Mounting hole drawing

