

# RAFIX 22 QR, keylock switch, round collar, frontring black, 2 x 90°, latching, key removal position 0

## DISCONTINUED



### fields of application

- Measurement-control-regulation
- Electrical engineering
- Mechanical and system engineering
- Vehicle construction

### special features

- Key-operated switches with various rotation angles and key removal positions.
- For key switches with three switch positions (e.g. 2 x 90 degrees with neutral position), the left or right switch element is actuated depending on the direction of rotation.
- Design adaptations through different front ring colors
- Firmly injection-molded collar seal, cannot twist or be lost during installation.
- 1-person mounting: the element is clamped by the seal in the mounting hole and can then be screwed from behind.
- Robust - suitable also for operation with gloves
- Degree of protection: IP 65 at the front
- Additional protection against twisting due to threaded ring with claw
- Installation diameter 22.3 mm
- Separate switching elements required
- Close mounting of actuators possible (min. 30 x 50 mm), as wiring is axial from behind
- Switching elements with silver contacts (max. 400 V) or gold contacts (max. 35 V / 100 mA)
- Connection types switching elements: cage clamp, screw connection or plug-in connection



description

RAFIX control units are modular units consisting of several parts. In the RAFIX 22 QR family, they always consist of an actuating element, coupling and switching element. Then this unit is snapped onto the key switch. To release, a bayonet lever must be actuated.

RAFIX 22QR key switches have the specified tactility and function only when assembled with the appropriate switching elements. You can choose between two collar shapes: round and square. The mounting diameter is 22.3 mm according to the standard. The anti-rotation lug can be easily removed with a screwdriver if necessary.

The locking systems we use were created according to the DIN EN 1303 standard by well-known lock manufacturers. They are open, mechanical systems which, depending on the environmental conditions, require occasional maintenance by the machine or system operator.

technical data

> general

Scope of delivery	2 keys	direct links
Front ring color	black	
Collar shape	round	> RAFI eCatalog
Operating temperature, min.	-25 °C	
Operating temperature, max.	70 °C	
Storage temperature, min.	-40 °C	
Storage temperature, max.	80 °C	
illuminated	No	
Packaging	Box	
Packaging unit	2 pcs.	
Operating life	50,000 cycles	
B10	65,000 cycles	
Degree of protection, front side, according to DIN EN 60529	IP65	
Environment resistance	IEC 60068-2-14	
	IEC 60068-2-30	
	IEC 60068-2-33	
	IEC 60068-2-78	
Protection class	II	
MOQ order	10 pcs.	
RoHS compliant	Yes	
REACH compliant	Yes	

> mounting diameters

Outside dimension, length	29.8 mm
Outside dimension, width	29.8 mm
Outside dimension, height	53.5 mm
Mounting hole	22.3 mm
Mounting depth	56.4 mm
Installation height	30.6 mm

Grid, min. 50 x 30 mm

Collar dimension ø 29,8 mm

➤ **mechanical data**

Actuation function latching

Operating torque, max. 2 Nm

Locking position 421

Key lock Ronis

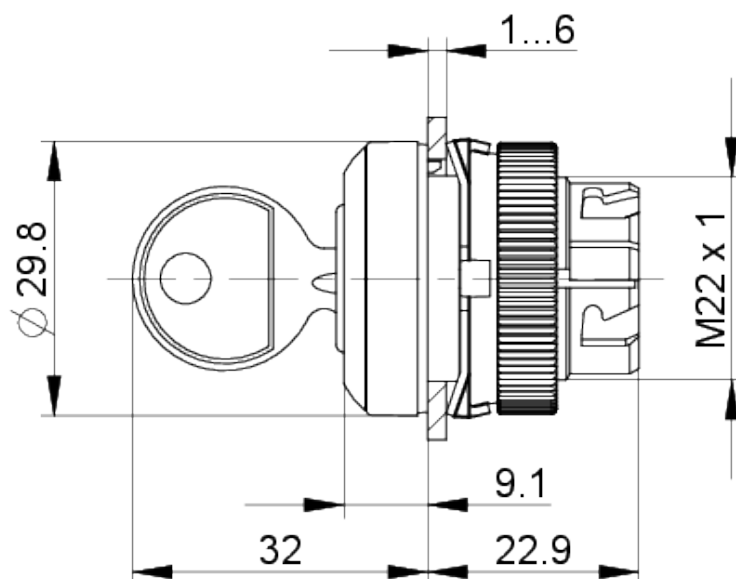
Key removal position 0

Rotating angle 2 x 90°

Fixing Threaded ring

Threaded ring torque, max. 1.2 Nm

## Dimensioned drawing



The technical drawing shows two views of the coupling block:

- Side View (Left):** Shows the profile of the block with a mounting flange on the left. Dimensions include a total width of 56.4 mm, a distance from the centerline to the inner edge of 39.5 mm, and internal vertical dimensions of 46 mm and 50 mm. A dimension of 1...6 indicates a range or tolerance at the top left.
- Front View (Right):** Shows the circular opening of the coupling. It features a central circular hole surrounded by a ring. The overall diameter is 30 mm. Two curved components, labeled "coupling", are shown extending from the top of the block.

## front panel drawing

