


RAFIX 22 FS<sup>+</sup>, compact keylock switch, round collar, frontring

metallic silver, 2 x 40°, momentary contact function, key removal

position 0



fields of application

➤ Measurement-control-regulation

➤ Electrical engineering

➤ Mechanical and system engineering

➤ Vehicle construction

➤ Handheld terminals

➤ Industrial robots

special features

➤ Key switch with low installation height

➤ Low installation depth 9.2 mm (PCB) or 27 mm (QC)

➤ Connection types: printed circuit board connection (PCB) or plug-in connection (QC)

➤ PCB switching elements minimize mounting errors

➤ Switching elements with silver contacts (max. 250 V/4 A) or gold contacts (max. 35 V/100 mA)

➤ Design adaptation through different front ring variations

➤ Degree of protection: IP 65 at the front

➤ Two collar shapes: round and square



description

RAFIX control devices are defined at RAFI as modular elements, consisting of an actuating element, if necessary a coupling and an individual contact or lighting unit.

Actuating elements (such as pushbuttons, emergency stop actuators, etc.) have the intended tactility, reset and function only when assembled with the appropriate switching elements.

The locking systems we use have been created by reputable lock manufacturers in accordance with the DIN EN 1303 standard. They are open, mechanical systems that require occasional maintenance by the operator depending on the ambient conditions.

Further locking positions or functions are available on request.

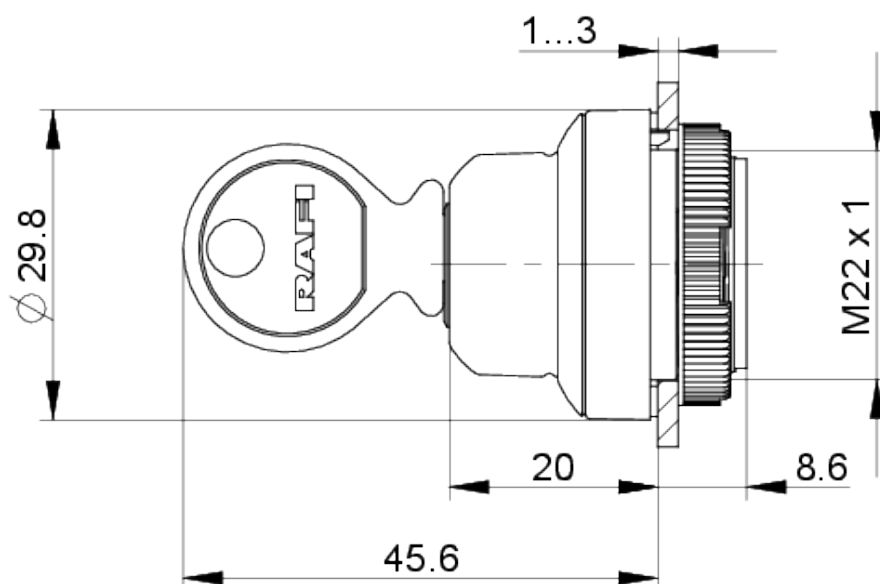
technical data

➤ general		direct links
Disassembly possible	no	➤ RAFI eCatalog
Scope of delivery	2 keys	
Front ring color	metallic silver	
Collar shape	round	
Operating temperature, min.	-25 °C	

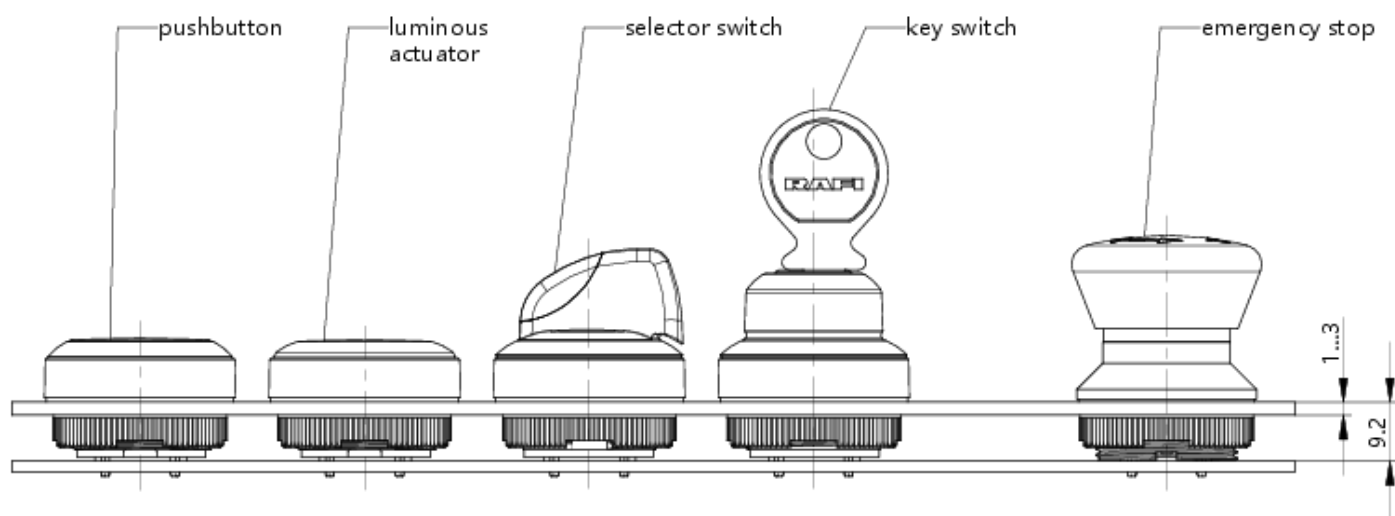
Operating temperature, max.	70 °C
Storage temperature, min.	-40 °C
Storage temperature, max.	80 °C
illuminated	No
Packaging	Box
Packaging unit	2 pcs.
net weight	39.6 g
Operating life	300,000 cycles
B10	390,000 cycles
Degree of protection, front side, according to DIN EN 60529	IP65
UL Enclosure Type Rating front side	type 1 type 4X indoor
Environment resistance	IEC 60068-2-14 IEC 60068-2-30 IEC 60068-2-33 IEC 60068-2-78
Salt-spray resistance according to standard	IEC 60068-2-11
MOQ order	10 pcs.
RoHS compliant	Yes
REACH compliant	Yes
<b>&gt; mounting diameters</b>	
Outside dimension, length	29.8 mm
Outside dimension, width	29.8 mm
Outside dimension, height	28.6 mm
Mounting hole	22.3 mm
Mounting depth	9.2 mm
Installation height	20 mm
Grid, min.	30 x 30 mm
Collar dimension	ø 29,8 mm
<b>&gt; mechanical data</b>	
Actuation function	momentary contact function
Operating torque, max.	1.3 Nm
Locking position	001
Key removal position	0
Rotating angle	2 x 40°
Fixing	Threaded ring
Threaded ring torque, max.	1.2 Nm

## drawings

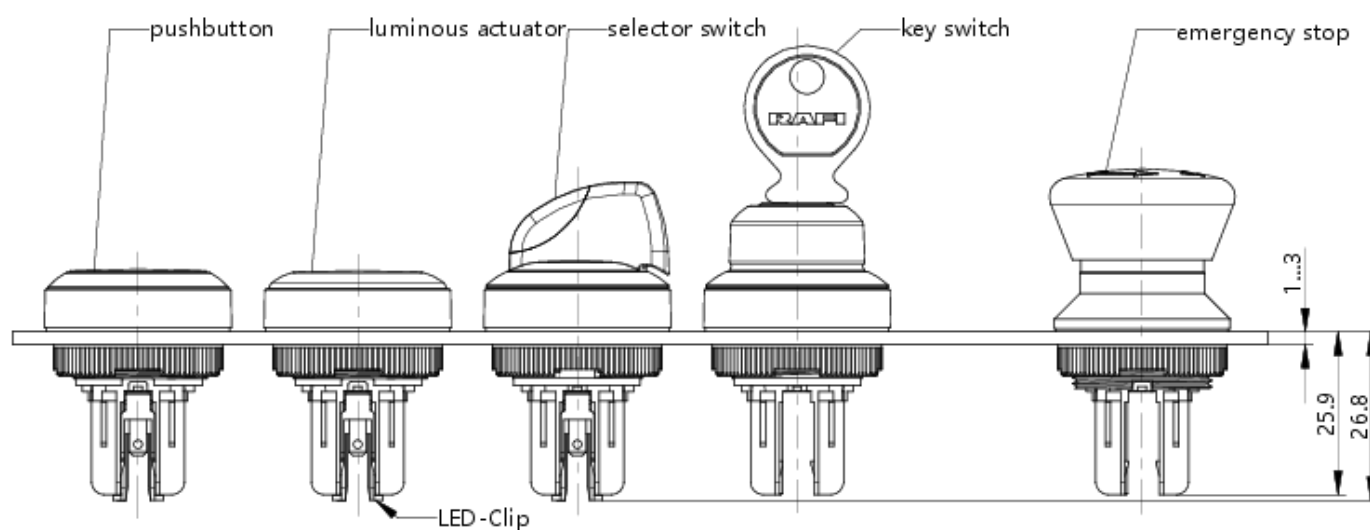
### Dimensioned drawing



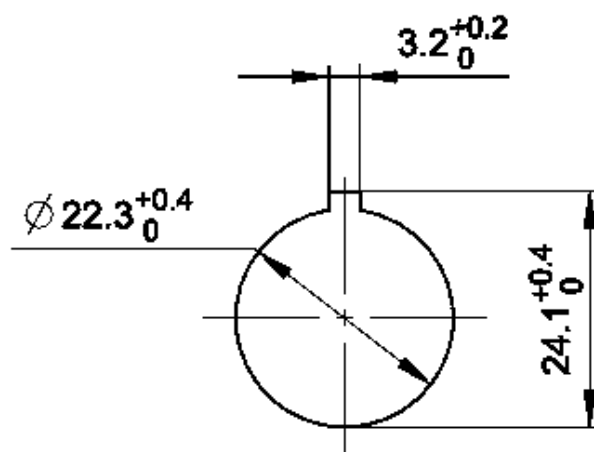
### System drawing



## System drawing



## Mounting hole drawing



acc. to IEC 60947-5-1

## front panel drawing

