

Signal lamp with integrated LED, 5 mm, protruding LED, lamp green, 28 Volt, Solder terminal



- fields of application**
- > Measurement-control-regulation
 - > Electrical engineering
 - > Mechanical and system engineering
 - > Signalling systems
 - > Model construction



description

Signal lamps with integrated LED, mounting hole diameter 5 mm

technical data

> **general**

Property of bezel / mushroom	transparent
Luminous element color	green
illuminated	Yes
Packaging unit	10 pcs.
net weight	0.4 g
Degree of protection, front side, according to DIN EN 60529	IP40
MOQ order	50 pcs.
RoHS compliant	Yes
REACH compliant	Yes

direct links

> [RAFI eCatalog](#)

> **mounting diameters**

Outside dimension, length	5.8 mm
Outside dimension, width	5.8 mm
Outside dimension, height	21 mm
Mounting hole	5 mm
Mounting depth	18 mm
Installation height	3 mm
Collar dimension	5.8 mm

> **mechanical data**

Fixing	Pushing into mounting hole
--------	----------------------------

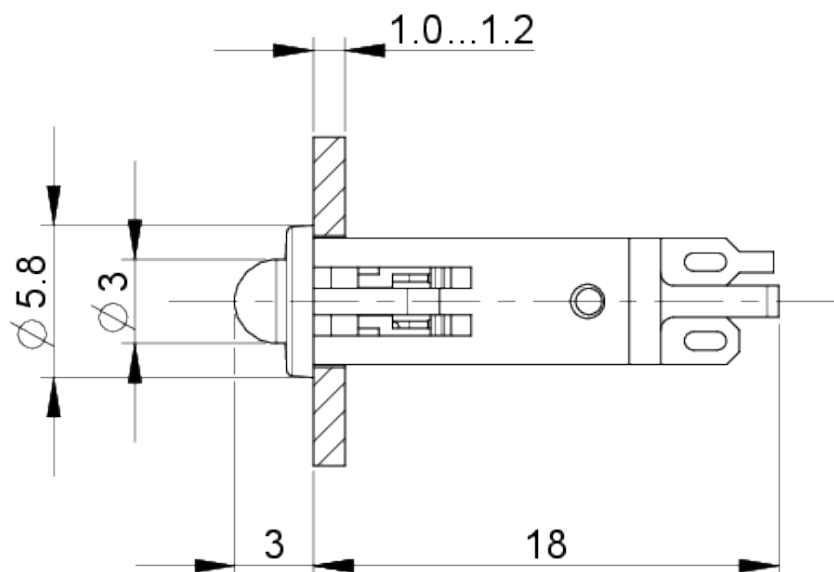
Solderability	Yes
Terminal on the rear	Solder terminal

> **electrical data**

Operating voltage of the luminous element, min.	24 V
Operating voltage of the luminous element, max.	28 V

drawings

Dimensioned drawing



Mounting hole drawing

