

RAFIX 22 FSR, signal indicator, round collar, bezel yellow



fields of application

- › Measurement-control-regulation
- › Mechanical and system engineering
- › Agricultural and forestry machinery
- › Construction machinery

special features

- › Lighting attachment
- › Illumination with SMT LED
- › Low installation depth 9.2 mm (PCB) or 27 mm (QC with LED clip)
- › Connection types: printed circuit board connection (PCB) or plug-in connection (QC)
- › Degree of protection: IP 65 front side



description

RAFIX control devices are defined at RAFI as modular elements, consisting of an actuating element, if necessary a coupling and an individual contact or lighting unit.

Actuating elements (such as pushbuttons, emergency stop actuators, etc.) have the intended tactility, reset and function only when assembled with the appropriate switching elements.

The RAFIX 22 FSR signal indicators are designed for illumination with SMT or THT LEDs. They ensure full illumination that can also be seen from the side.

technical data

› general

| | |
|---|----------------------------------|
| Bezel color | yellow |
| Property of bezel / mushroom | translucent |
| Collar shape | round |
| Operating temperature, min. | -40 °C |
| Operating temperature, max. | 85 °C |
| Storage temperature, min. | -40 °C |
| Storage temperature, max. | 85 °C |
| illuminated | Yes |
| Packaging | Box |
| Packaging unit | 10 pcs. |
| net weight | 10.5 g |
| Degree of protection, front side, according to DIN EN 60529 | IP65 IP67 IP69 |
| UL Enclosure Type Rating front side | type 1 type 4X indoor |
| Environment resistance | IEC 60068-2-14 IEC 60068-2-30 |

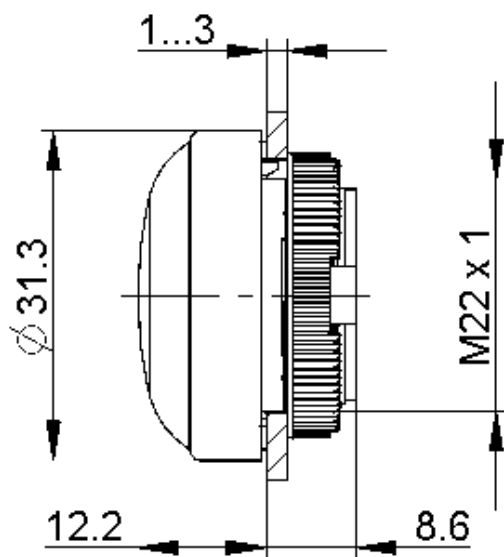
direct links

- › [RAFI eCatalog](#)

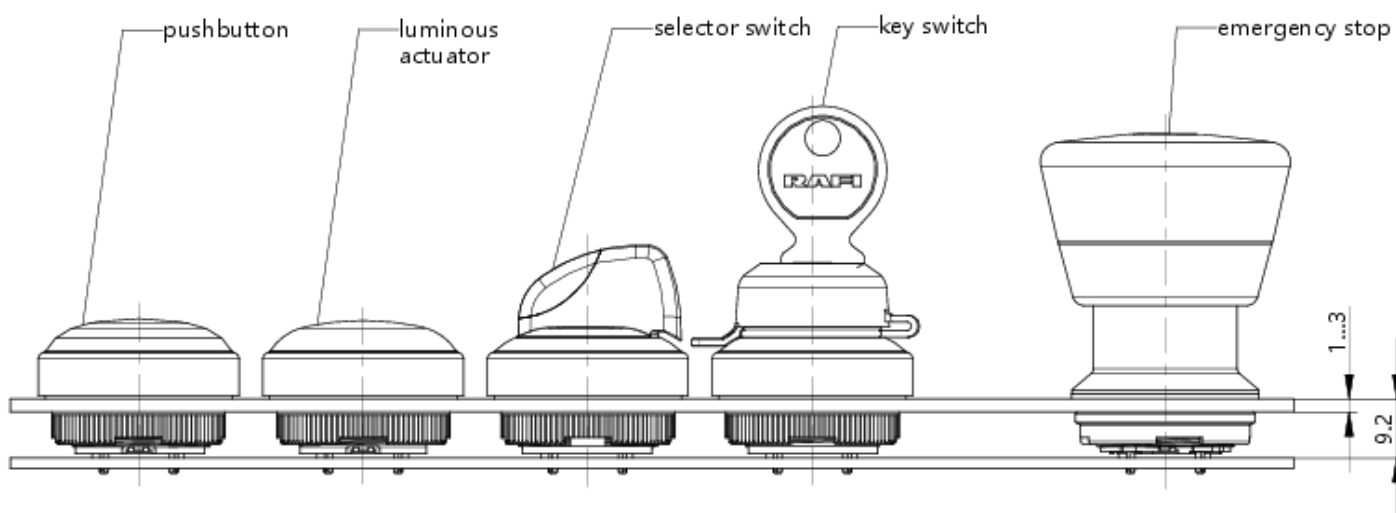
| | |
|---|----------------|
| | IEC 60068-2-33 |
| | IEC 60068-2-78 |
| Salt-spray resistance according to standard | IEC 60068-2-11 |
| shock resistance | 06 |
| MOQ order | 10 pcs. |
| RoHS compliant | Yes |
| REACH compliant | Yes |
| > mounting diameters | |
| Outside dimension, length | 31.3 mm |
| Outside dimension, width | 31.3 mm |
| Outside dimension, height | 20.8 mm |
| Mounting hole | 22.3 mm |
| Mounting depth | 9.2 mm |
| Installation height | 12.2 mm |
| Grid, min. | 35 x 35 mm |
| Collar dimension | ø 31,3 mm |
| > mechanical data | |
| Fixing | Threaded ring |
| Threaded ring torque, max. | 1.2 Nm |

drawings

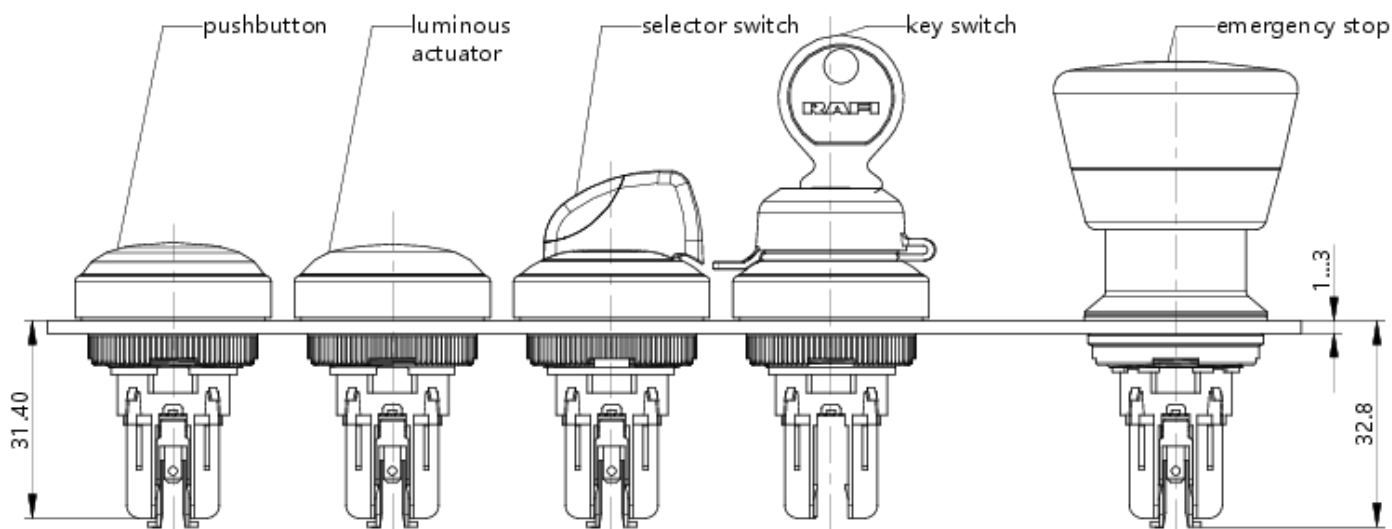
Dimensioned drawing



System drawing



System drawing



front panel drawing

