

## RF 15, indicator field, full illumination, lamp green, bezel green



### fields of application

- Measurement-control-regulation
- Mechanical and system engineering
- Automotive
- Electro-medical

### special features

- Full illumination with 1 LED



### description

RF 15 indicator fields have a 15 x 15 mm edge length and are used under overlays in flat data entry keyboards as pure indicators.

### technical data

#### ➤ general

Bezel color	green
Luminous element color	green
Operating temperature, min.	-25 °C
Operating temperature, max.	70 °C
Storage temperature, min.	-25 °C
Storage temperature, max.	70 °C
illuminated	Yes
Luminous elements	Full illumination LED
Soldering time for manual soldering, max.	5 sec
Soldering temperature for manual soldering	350 °C
Soldering temperature for wave soldering	260 °C
Soldering	Manual / wave
Solder heat resistance according to standard	DIN EN 60068-2-20
Packaging	Tube
Packaging unit	32 pcs.
net weight	2.1 g
MOQ order	32 pcs.
RoHS compliant	Yes
REACH compliant	Yes

#### direct links

- [RAFI eCatalog](#)

#### ➤ mounting diameters

Outside dimension, length	15 mm
Outside dimension, width	15 mm
Outside dimension, height	9.15 mm

Installation height	9.15 mm
Grid, min.	19.05 mm

**> mechanical data**

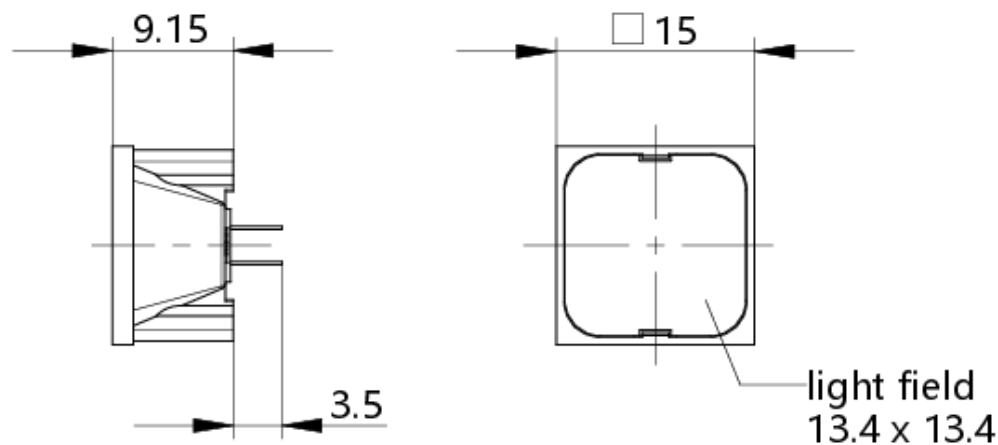
Switching travel	0.5 <sup>+0.3</sup> mm
Fixing	Soldering
Solderability	Yes
Terminal on the rear	THT

**> electrical data**

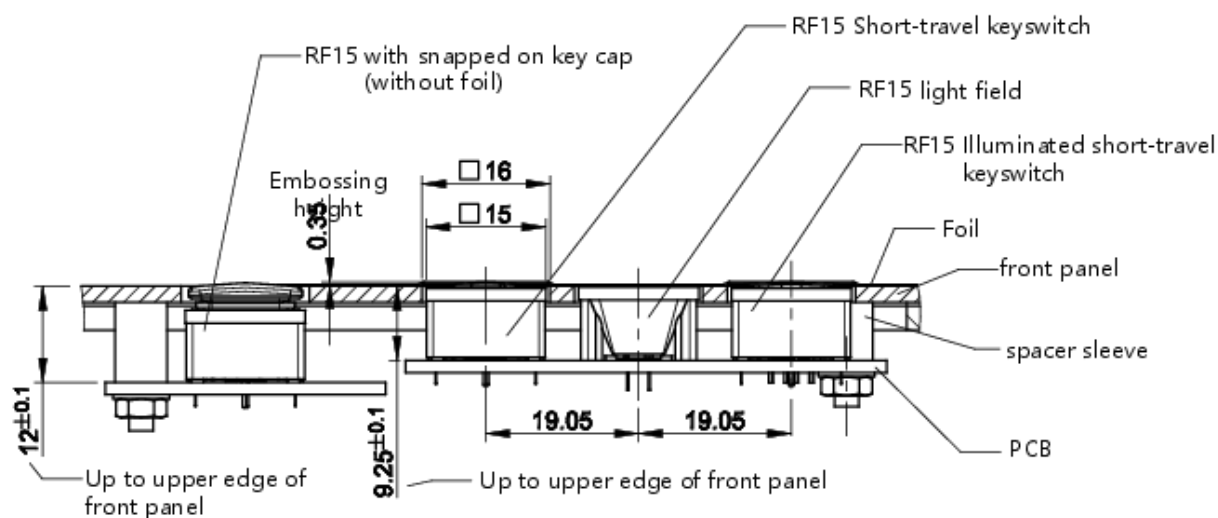
Operating voltage of the luminous element, min.	2 V
Operating voltage of the luminous element, max.	5 V
Operating current of the luminous element, max.	30 mA
dropping resistor	no

## drawings

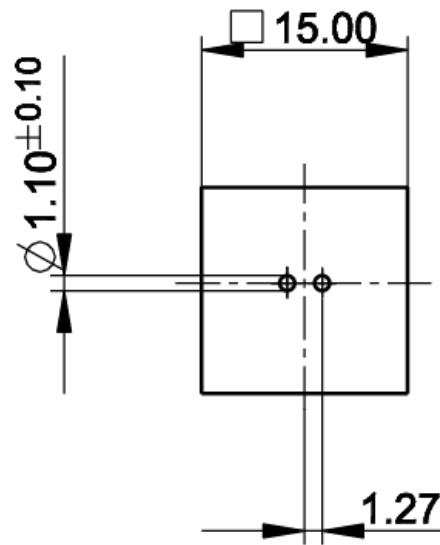
### Dimensioned drawing



### System drawing



## PCB drawing



light field

## front panel drawing

