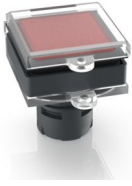


## RAFIX 16, protective cap, lockable

---



### fields of application

- > Measurement-control-regulation
- > Electrical engineering
- > Mechanical and system engineering
- > Signalling systems
- > Vehicle construction
- > Handheld terminals
- > Industrial robots

### description

### technical data

---

#### > general

Feature	lockable
Packaging unit	10 pcs.
net weight	12 g
MOQ order	10 pcs.
RoHS compliant	Yes
REACH compliant	Yes

#### direct links

- > [RAFI eCatalog](#)