


LUMOTAST 16, illuminated pushbutton, round collar, C-LAB, momentary contact function, 1 NO, inscribable



fields of application

➤ Measurement-control-regulation

➤ Electrical engineering

➤ Mechanical and system engineering

➤ Signalling systems

➤ Handheld terminals

➤ Industrial robots

➤ Model construction

special features

➤ Illuminated by integrated LED

➤ Option: C-LAB variant with replaceable legend inserts

➤ Round mounting hole, diameter 16.2 mm

➤ Mounting depth: 18 mm

➤ Terminal: male quick-connect terminal 2.8 x 0.5 mm

➤ Gold or silver contacts

➤ Contacts: Standard: 1NO

➤ max 35 V / 100 mA

➤ Water jet protection class IP 65 and IP 67 on front



description

Through the use of RAFI tactile switches, the LUMOTAST 16 illuminated pushbuttons offer crisp, tactile feedback – with a distinct key click. They offer an impressively wide range of possible industrial uses and applications.

LUMOTAST 16 C-LAB illuminated pushbuttons can be configured easily by the customer. This means various front ring colors can be combined with the bezels according to the user’s own wishes or design preferences. It also means that customized label symbols or texts can be implemented.

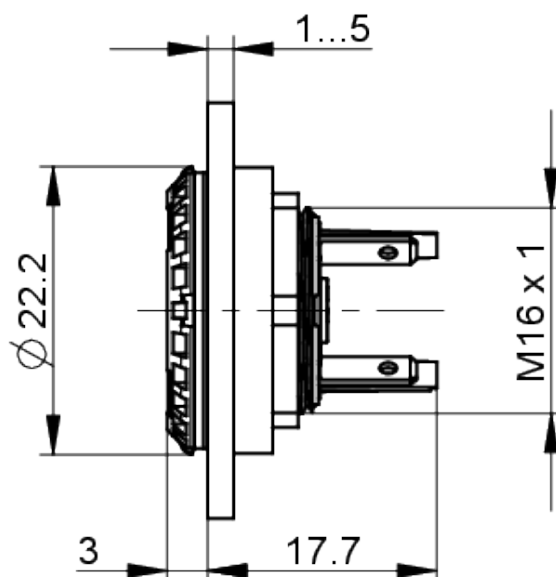
technical data

➤ general		direct links
Collar color	black	➤ RAFI eCatalog
Luminous element color	white	
Collar shape	round	
Operating temperature, min.	-25 °C	
Operating temperature, max.	70 °C	
Storage temperature, min.	-40 °C	
Storage temperature, max.	80 °C	
illuminated	Yes	
Packaging	Box	
Packaging unit	10 pcs.	
net weight	4.2 g	
Operating life	500,000 cycles	
B10	600,000 cycles	
Degree of protection, front side, according to DIN EN 60529	IP65 IP67	

UL Enclosure Type Rating front side	type 1
Vibration-resistance according to standard IEC 60068-2-6	5 g at 10 - 500 Hz
MOQ order	10 pcs.
RoHS compliant	Yes
REACH compliant	Yes
<b>&gt; mounting diameters</b>	
Outside dimension, length	23.5 mm
Outside dimension, width	23.5 mm
Outside dimension, height	22.3 mm
Mounting hole	16.2 mm
Mounting depth	18 mm
Installation height	4.6 mm
Collar dimension	23.5 mm
<b>&gt; mechanical data</b>	
Actuation function	momentary contact function
Contact function	1 NO
Contact system	Snap-action contact
Contact material	Gold
Fixing	Threaded ring
Solderability	No
Threaded ring torque, max.	0.8 Nm
Terminal on the rear	Flat quick-connect terminal 2.8 x 0.5
<b>&gt; electrical data</b>	
Rated insulation voltage	42 V
Operating voltage of the luminous element, min.	10 V
Operating voltage of the luminous element, max.	32 V
Rated voltage, min.	0.02 V
Rated voltage, max.	35 V
Rated voltage, max. acc. to UL 60947	30 V AC (42,2 V peak)
Voltage type	DC
Rated operating voltage	0.02-35 V
Operating current of the luminous element, min.	18 mA
Operating current of the luminous element, max.	25 mA
Rated current, min.	0.0001 A
Rated current, max.	0.1 A
Rated power, max.	1 W

## drawings

### Dimensioned drawing



### Mounting hole drawing



**Schematic diagram**