


LUMOTAST 16, emergency stop button, illuminated, 2 NC, Silver, Flat quick-connect terminal 2.8 x 0.5 tin-plated, reset by rotating, arrows red



fields of application

➤ Measurement-control-regulation

➤ Electrical engineering

➤ Mechanical and system engineering

➤ Signalling systems

➤ Handheld terminals

➤ Industrial robots

➤ Model construction

special features

➤ Round mounting hole, diameter 16.2 mm

➤ Mounting depth: 18 mm

➤ Terminal: male quick-connect terminal 2.8 x 0.5 mm

➤ Solderability: lead-free soldering with maximum 280°C for 5 seconds

➤ Water jet protection class IP 65 and IP 67 on front



description

The LUMOTAST 16 emergency stop elements are equipped with up to 3 contacts. This means that, for example, 2 redundant contacts can be earmarked for safety applications, while a signaling contact triggers the position sensing. An additional safety factor for your application.

technical data

➤ general		direct links
Color of mushroom	red	➤ RAFI eCatalog
Legending color	red	
Bezel color	red	
Property of bezel / mushroom	translucent	
Collar color	yellow	
Luminous element color	red	
Collar shape	round	
Operating temperature, min.	-25 °C	
Operating temperature, max.	70 °C	
Storage temperature, min.	-40 °C	
Storage temperature, max.	80 °C	
illuminated	Yes	
Luminous elements	LED	
Packaging	Box	
Packaging unit	10 pcs.	
net weight	12.5 g	
Operating life	30,000 cycles	
B10	50,000 cycles	
B10d	100,000 cycles	

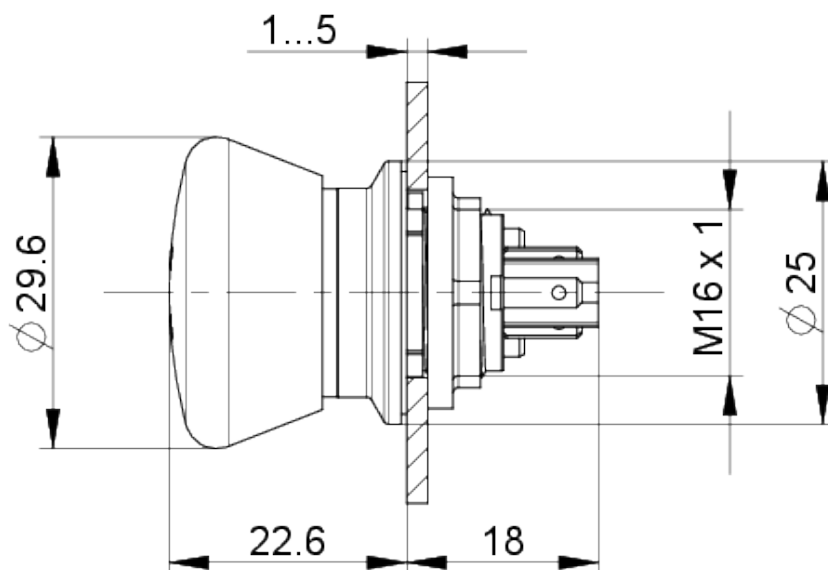
Degree of protection, front side, according to DIN EN 60529	IP65 IP67
UL Enclosure Type Rating front side	type 1
Environment resistance	IEC 60068-2-27 IEC 60068-2-30
Impact resistance IK	05 side 05 frontal
MOQ order	10 pcs.
Pollution degree acc. to DIN EN 61010-1	Pollution degree 2
RoHS compliant	Yes
REACH compliant	Yes
> mounting diameters	
Outside dimension, length	29.6 mm
Outside dimension, width	29.6 mm
Outside dimension, height	40.6 mm
Mounting hole	16.2 mm
Mounting depth	18 mm
Installation height	22.6 mm
> mechanical data	
Actuation function	latching
Contact function	2 NC
Contact material	Silver
Resetting	by rotating
Fixing	Threaded ring
Solderability	Yes
Threaded ring torque, max.	0.8 Nm
Terminal on the rear	Flat quick-connect terminal 2.8 x 0.5 tin-plated
> electrical data	
Rated insulation voltage	250 V
Operating voltage of the luminous element, min.	18 V
Operating voltage of the luminous element, max.	28 V
Rated voltage, min.	10 V
Rated voltage, max. acc. to UL 60947	35 V / 2 A (AC / DC)
Voltage type	AC / DC
Rated operating voltage	0.01-250 V
Operating current of the luminous element, min.	8 mA
Operating current of the luminous element, max.	18 mA
Rated current, min.	0.015 A
Rated power, max.	250 W
Category of use AC-15 / B300	240 V / 1,5 A (IEC 60947) 35 V / 5 A (IEC 60947)

Category of use DC-13 / Q300

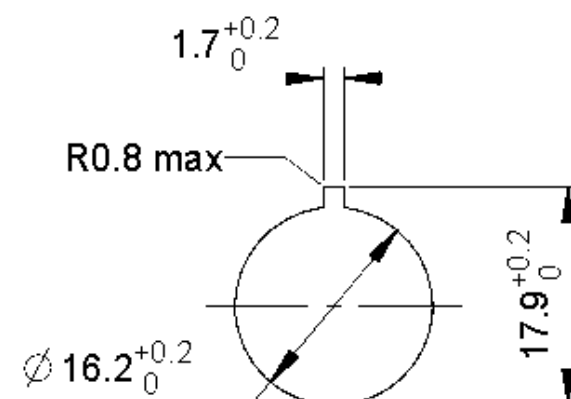
35 V / 2 A (IEC60947)
250 V / 0,27 A (IEC)

drawings

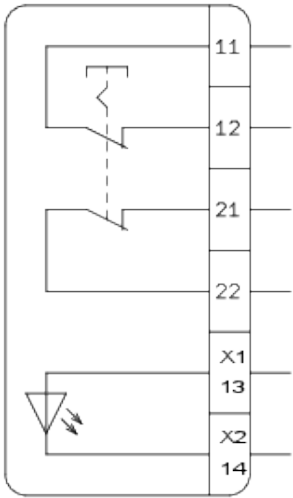
Dimensioned drawing



Mounting hole drawing



Schematic diagram



mounting

LUMOTAST 16, LUMOTAST 22, LUMOTAST 25, RAMO 22, RAMO 30

Betriebsanleitung Not-Halt-Befehlsgeräte
(Original)

Operating Instructions EMERGENCY STOP
Control Units (Translation of the source text)

Mode d'emploi auxiliaires de commande
d'ARRÊT D'URGENCE (Traduction original)

<