

## RAFIX 16, signal indicator, round bezel, bezel green



### fields of application

- > Measurement-control-regulation
- > Electrical engineering
- > Mechanical and system engineering
- > Industrial robots

### special features

- > Lighting attachment in 3 waistband shapes
- > illumination with LED or incandescent lamp
- > Degree of protection: IP 65 at the front
- > Separate snap-on lamp socket required



### description

RAFIX control devices are modular units consisting of several parts. In the RAFIX 16 family, they always consist of an actuating element and a switching element, or of an indicator lamp and a lamp socket. Actuating elements (such as pushbuttons or emergency stop actuators) have the specified tactility, reset and function only when assembled with the appropriate switching elements. For illuminated actuators, please use switching elements with lamp socket.

With RAFIX 16 actuators, you can choose between three collar shapes: round, square or square side-by-side, where the pushbuttons can be lined up seamlessly. The mounting diameter is 16.2 mm according to the standard. The anti-rotation lug can be easily removed with a screwdriver if necessary.

### technical data

#### > general

|   |  |
|---|--|
| Bezel color   | green  |
| Property of bezel / mushroom                                | transparent  |
| Collar shape  | round  |
| Operating temperature, min.                                 | -25 °C   |
| Operating temperature, max.                                 | 70 °C  |
| Storage temperature, min.                                   | -40 °C   |
| Storage temperature, max.                                   | 85 °C  |
| illuminated   | Yes  |
| Packaging   | Box  |
| Packaging unit  | 5 pcs.   |
| net weight  | 3.7 g  |
| Degree of protection, front side, according to DIN EN 60529 | IP65   |
| Environment resistance                                      | IEC 60068-2-14<br>IEC 60068-2-30<br>IEC 60068-2-33<br>IEC 60068-2-78 |
| MOQ order   | 50 pcs.  |

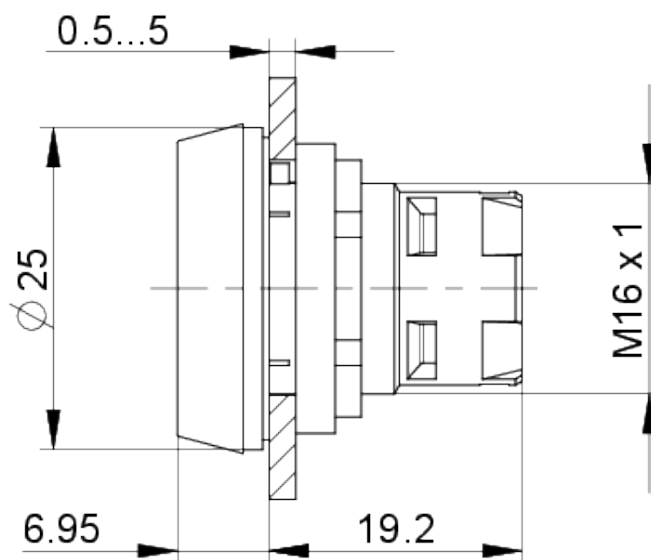
#### direct links

- > [RAFI eCatalog](#)

|                                |               |
|--------------------------------|---------------|
| RoHS compliant                 | Yes           |
| REACH compliant                | Yes           |
| <b>&gt; mounting diameters</b> |               |
| Outside dimension, length      | 24.95 mm      |
| Outside dimension, width       | 24.95 mm      |
| Outside dimension, height      | 26.35 mm      |
| Mounting hole                  | 16.2 mm       |
| Mounting depth                 | 44.7 mm       |
| Installation height            | 6.95 mm       |
| Grid, min.                     | 25 x 25 mm    |
| Collar dimension               | ø 24,95 mm    |
| <b>&gt; mechanical data</b>    |               |
| Fixing                         | Threaded ring |
| Threaded ring torque, max.     | 1.2 Nm        |

**drawings**

**Dimensioned drawing**



**Mounting hole drawing**

