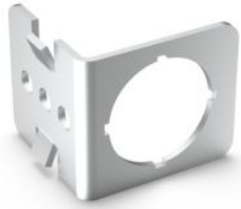


RAMO 30 EDGE



fields of application

- › Measurement-control-regulation
- › Electrical engineering
- › Mechanical and system engineering
- › Signalling systems
- › Vehicle construction
- › Chemical industry
- › Industrial robots

description

With the EDGE mounting bracket, the RAMO can be mounted on profiles and without additional insulating material housing. This offers freedom in mounting and new possibilities to place the components away from the central machine or device control panel.

technical data

› general

Packaging unit	2 pcs.
net weight	35.6 g
MOQ order	2 pcs.
RoHS compliant	Yes
REACH compliant	Yes

direct links

- › [RAFI eCatalog](#)

› mounting diameters

Outside dimension, length	45 mm
Outside dimension, width	40 mm
Outside dimension, height	40 mm
Mounting hole	30.3 mm
Grid, min.	40 mm

› mechanical data

Resistance to force on the side	100 N
---------------------------------	-------

drawings

Dimensioned drawing

